

Acer WLAN 11g PCMCIA Card

Quick Installation Guide



This product is in compliance with the essential requirements and other relevant provisions of the

R&TTE directive 1999/5/EC.



This product has been designed for the 2.4Ghz WLAN network throughout the EC region and Switzerland, with restrictions in France.

Product Name: Acer WLAN 11g PCMCIA Card

Model Name : WLAN-G-PC1

COUNTRY		CHANNELS	MAX. OUT. POWER	
			INDOOR	OUTDOOR
Spain	2400-2483.5 MHz	1-13	< 100mW EIRP	< 100mW EIRP
France	2400-2454 MHz	1-8	< 100mW EIRP	< 100mW EIRP
France	2454-2483.5 MHz	9-13	< 100mW EIRP	< 10mW EIRP
Italy	2400-2483.5 MHz	1-13	< 100mW EIRP	< 100mW EIRP
UK	2400-2483.5 MHz	1-13	< 100mW EIRP	< 100mW EIRP
Netherlands	2400-2483.5 MHz	1-13	< 100mW EIRP	< 100mW EIRP
Germany	2400-2483.5 MHz	1-13	< 100mW EIRP	< 100mW EIRP
Austria	2400-2483.5 MHz	1-13	< 100mW EIRP	< 100mW EIRP
Belgium	2400-2483.5 MHz	1-13	< 100mW EIRP	< 100mW EIRP
Switzerland	2400-2483.5 MHz	1-13	< 100mW EIRP	< 100mW EIRP
Luxembourg	2400-2483.5 MHz	1-13	< 100mW EIRP	< 100mW EIRP
Ireland	2400-2483.5 MHz	1-13	< 100mW EIRP	< 100mW EIRP
Portugal	2400-2483.5 MHz	1-13	< 100mW EIRP	< 100mW EIRP
Norway	2400-2483.5 MHz	1-13	< 100mW EIRP	< 100mW EIRP
Denmark	2400-2483.5 MHz	1-13	< 100mW EIRP	< 100mW EIRP
Finland	2400-2483.5 MHz	1-13	< 100mW EIRP	< 100mW EIRP
Iceland	2400-2483.5 MHz	1-13	< 100mW EIRP	< 100mW EIRP
Greece	2400-2483.5 MHz	1-13	< 100mW EIRP	< 100mW EIRP
Lichtenstein	2400-2483.5 MHz	1-13	< 100mW EIRP	< 100mW EIRP
Sweden	2400-2483.5 MHz	1-13	< 100mW EIRP	< 100mW EIRP

Acer WLAN 11g PCMCIA Card

Quick Installation Guide

1

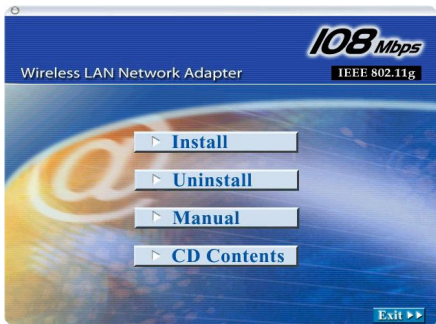
Installation and Setup

Before insert PCMCIA Adapter into the PC Card slot of your computer, please install the Driver&Utility Program first.

Make sure that the 11g LAN PCMCIA Card is **NOT** inserted into the PC Card slot.



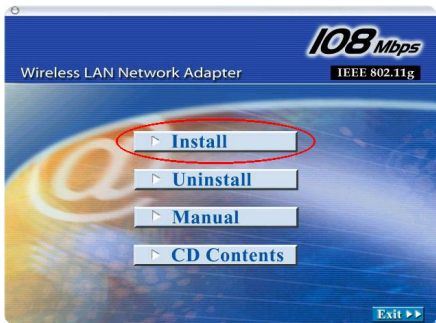
Turn on the computer.
Insert the CD into the CD-ROM Drive.



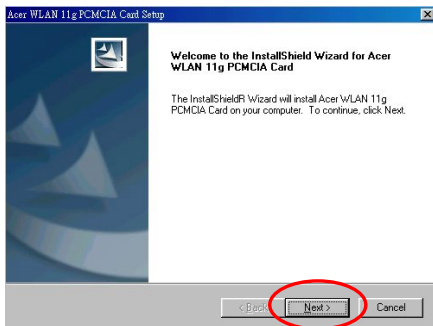
NOTE:

All the captured images of installation mentioned in this user's manual were based on Windows XP operating system. For installation on other Windows OS, e.g. Windows 98 SE, all the procedures remains the same.

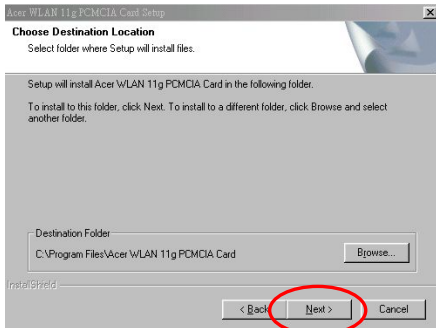
Click on the **"Install"** button on the selection menu.



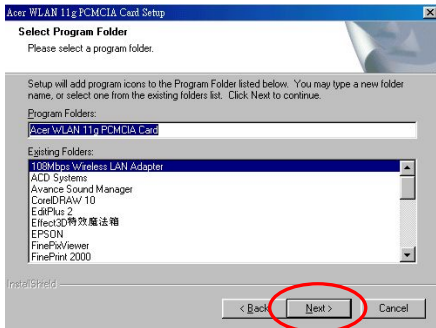
InstallShield Wizard starts. Click **"Next"** to continue.



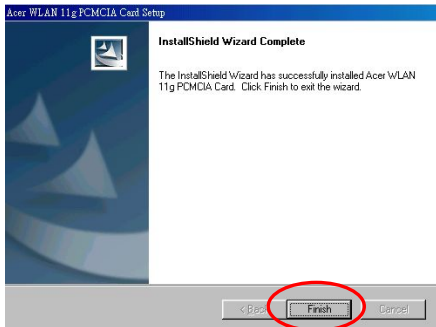
Click "**Next**" to install the program files in the default folder.



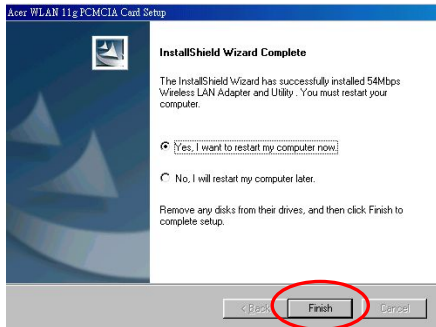
Select a Program Folder, and click "**Next**" to start copying the files.



Click **"Finish"** to complete the installation.



Select **"Yes, I want to restart my computer now."** and click **"Finish"** to restart the computer.



NOW.

1. After the computer restarted, insert the Wireless LAN PCMCIA Adapter into the empty PC Card slot. Your PC should detect the new hardware automatically.
2. Continue with **Installation setup**.

2

Installation and Setup

Select "**Yes, I want to restart my computer now.**" and click "**Finish**" to restart the computer.



Click "**Continue Anyway**" to continue

Hardware Installation



The software you are installing for this hardware:
108Mbps High Speed Wireless Network Adapter

has not passed Windows Logo testing to verify its compatibility with Windows XP. ([Tell me why this testing is important](#))

Continuing your installation of this software may impair or destabilize the correct operation of your system either immediately or in the future. Microsoft strongly recommends that you stop this installation now and contact the hardware vendor for software that has passed Windows Logo testing.

Continue Anyway

STOP Installation

Click "**Finish**" to complete new hardware installation.

Found New Hardware Wizard



Completing the Found New Hardware Wizard

The wizard has finished installing the software for:



108Mbps High Speed Wireless Network Adapter

Click Finish to close the wizard.

< Back

Finish

Cancel

After successful installation, a utility program icon will appear on your desktop screen. To launch the utility, simply double-click the icon.

